

# CleanAir

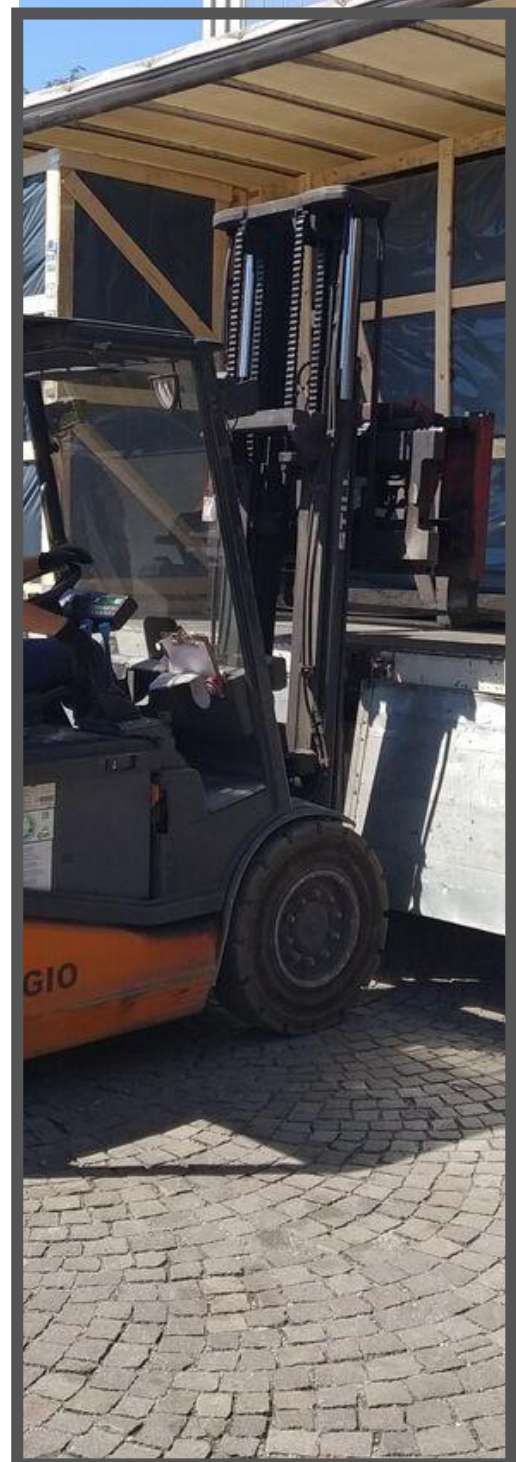


Your filtration's support

TECHNICAL GUIDE

# INSTRUCTION FOR CORRECT STORAGE AND HANDLING

FOR EXPERTS



CleanAir



# 14

JUNE  
2019

Rev.06

# INSTRUCTION FOR CORRECT STORAGE AND HANDLING

## Summary

CHAPTER 1: GENERAL INFORMATION	.....	02
CHAPTER 2: GUARANTEES AND RESPONSIBILITY	.....	03
CHAPTER 3: PACKING	.....	04
CHAPTER 4: MARKING	.....	07
CHAPTER 5: RECOMMENDATIONS ON OPERATING PROCEDURES FOR PACKAGE HANDLING	.....	08
CHAPTER 6: PRECAUTIONS AND SAFETY	.....	12
6.1. Use of forklifts		
6.2. Hazards		
6.3. Cage with Venturi		

## CHAPTER 1: GENERAL INFORMATION

These specifications indicate the **procedures** adopted by CleanAir Europe s.r.l. for **adequate** protection and packing of filtering supports (hereinafter referred to as products) according to the current laws and/or internal reference standards.

They make the recommendations needed for the proper storage and handle of products and packages (cages – crates) after delivery, so that the goods contained in them **maintain their construction and quality characteristics unaltered** until the end use, in compliance with the customer's expectations, contractual requirements and related technical specifications.

CleanAir

## CHAPTER 2. GUARANTEES AND RESPONSIBILITY

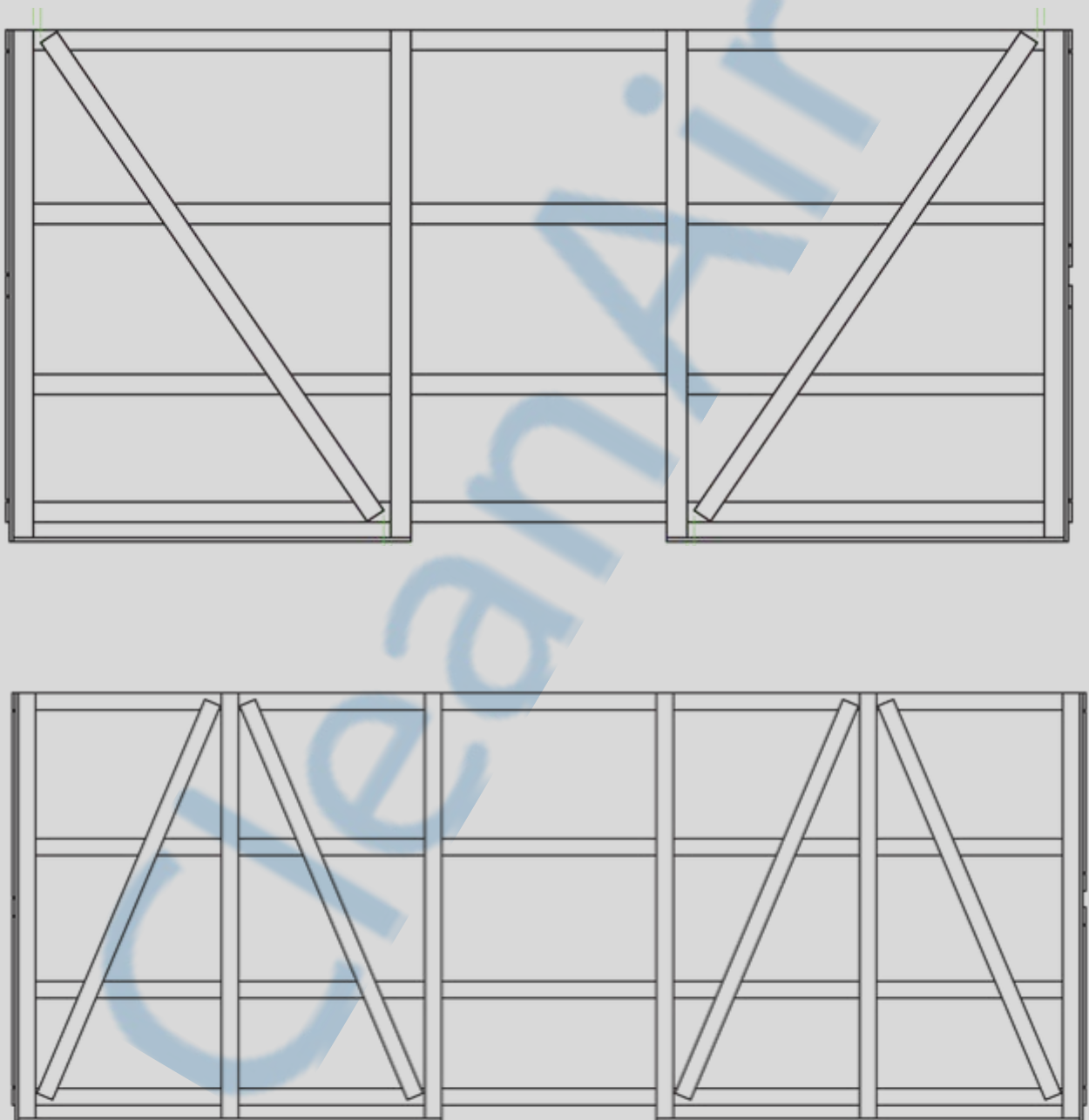
CleanAir Europe s.r.l. **guarantees** its products compliance with the established construction and quality requirements ex-works from its plant, i.e it is **responsible** for the storage conditions and intactness of stored products **only in its storage areas**. Hence, CleanAir Europe s.r.l. **shall not be held liable for any damage** caused by failure to comply with the storage and **handling recommendations**, both during the transport of the goods from its plant to the final destination or deposit sites and in areas set up for temporary storage at construction sites before assembly of the products in the systems which they are intended for.



## CHAPTER 3. PACKING

With the exception of the agreements specified by the customer during the order phase, standard packages are made up of wooden crates opened on the top; in this way the material is not protected by wrapping.

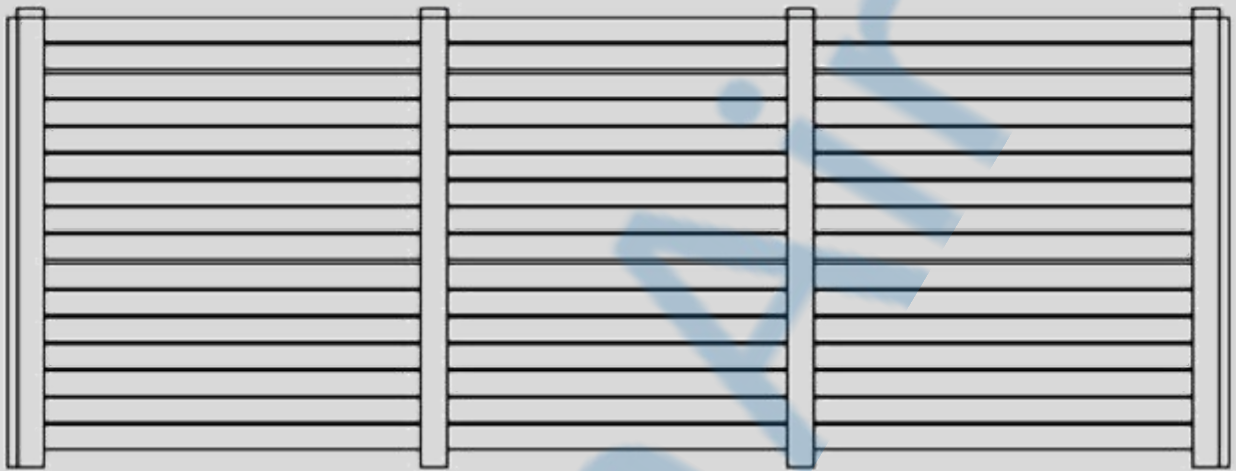
An example of packing is illustrated here below:





Our experts will design the wood special crate to withstand repeated handling and changing environment during international ocean shipping in order to protect the cage against the corrosion of the salt during transport.  
Ask to the sales department for info and prices .

An example of packing is illustrated here below:



On specific customer requests, the product contained in the packages can be covered with an **anti-corrosive plastic film** (VCI) or special films that protect the internal walls (barrier bags) and the product contained inside them.

Crate with barrier bag



Crate with plastic film / VCI



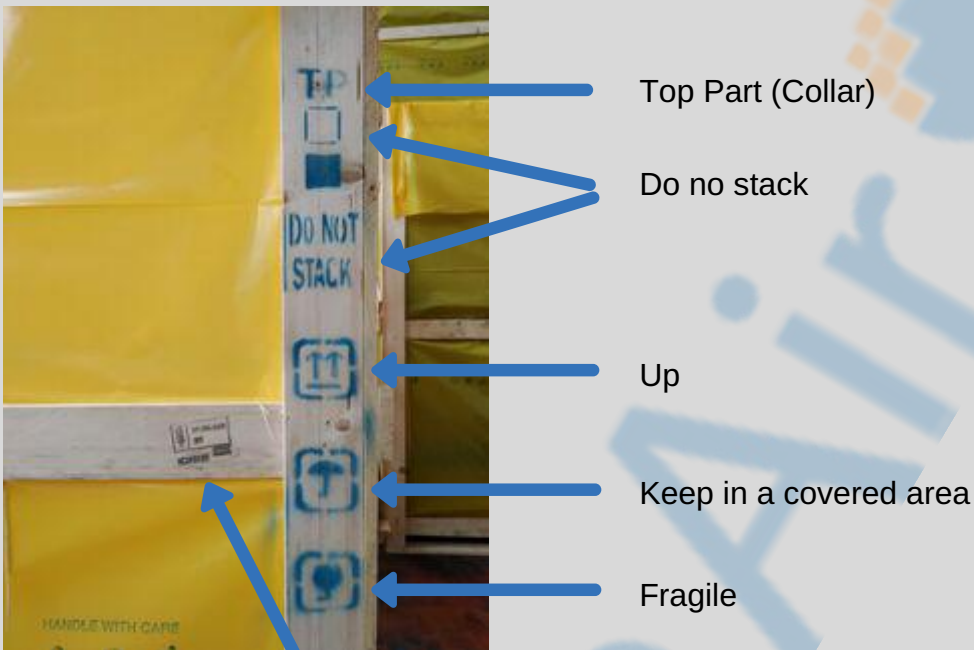
Crate with hole for ventilation



## CHAPTER 4. MARKINGS

The packages are identified with the CleanAir registered trademark and symbols **required** by current laws and regulations (as illustrated here below).

CleanAir uses only **fumigated wood** for the crates. The Company is certificated ISPM and all the crates are stamped with ISPM mark.



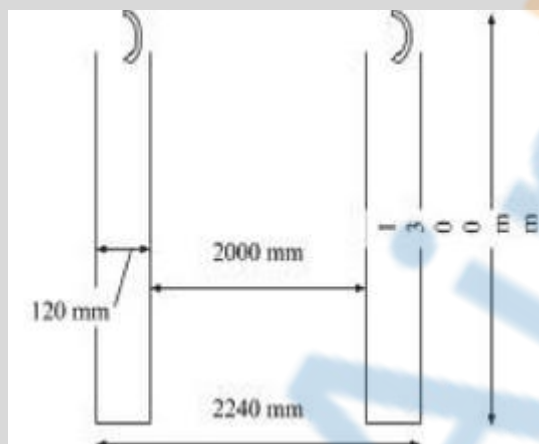
Authorized subject





## CHAPTER 5. OPERATING PROCEDURES FOR PACKAGE HANDLING

The handling of packages must be performed with a forklift, using the forks in the widest position (recommended minimum fork dimensions: centre to centre distance 2000 mm; width 120 mm; length 1300 mm) according to the picture shown here below:



The packages must be forked on each side of their centre line, making sure that the side of the packages sits against the uprights of the forklift. On the lowest part of the crates two blue or black signs are meant to suggest the correct position to fork the crates (as shown in the picture here below (1)):



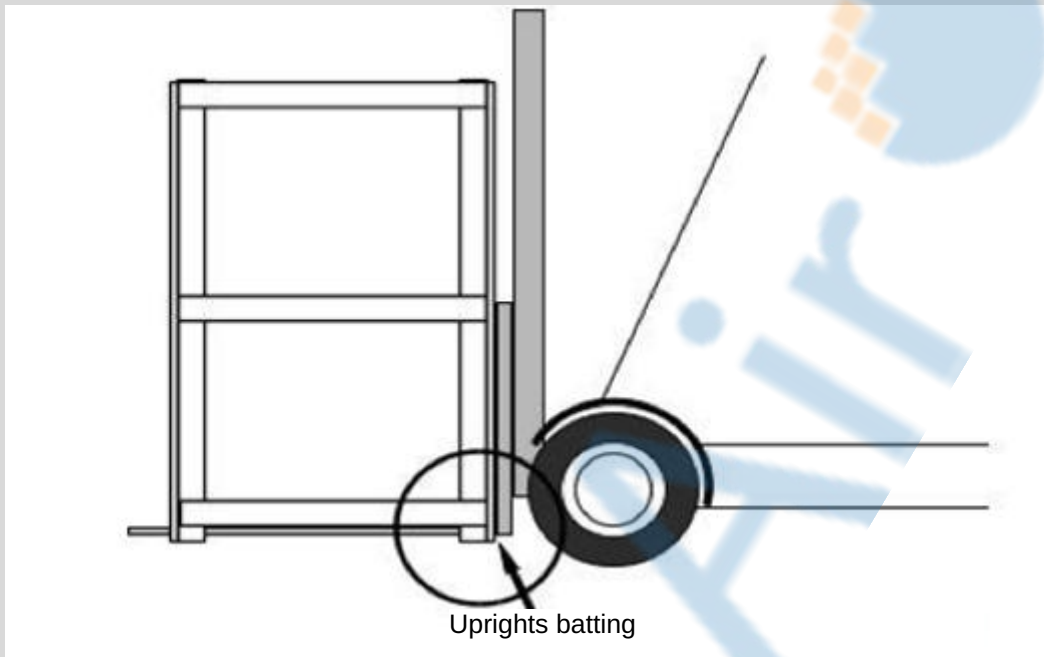
1

Position of the forklift

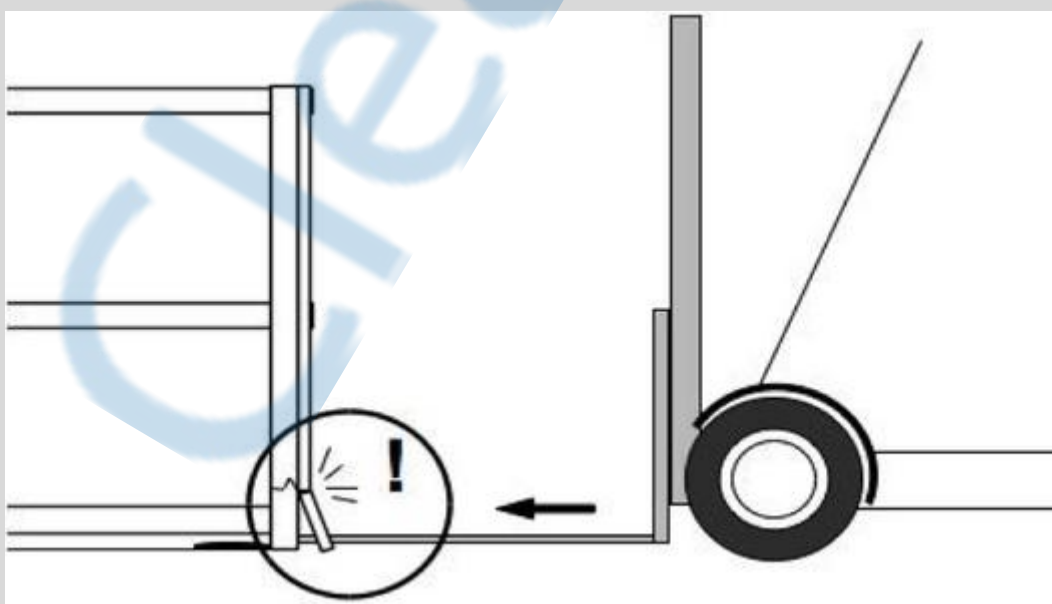
1

Position of the forklift

Move the crate slowly and with the utmost attention in order not to damage the products and the package and make sure **not to tilt** it while moving.

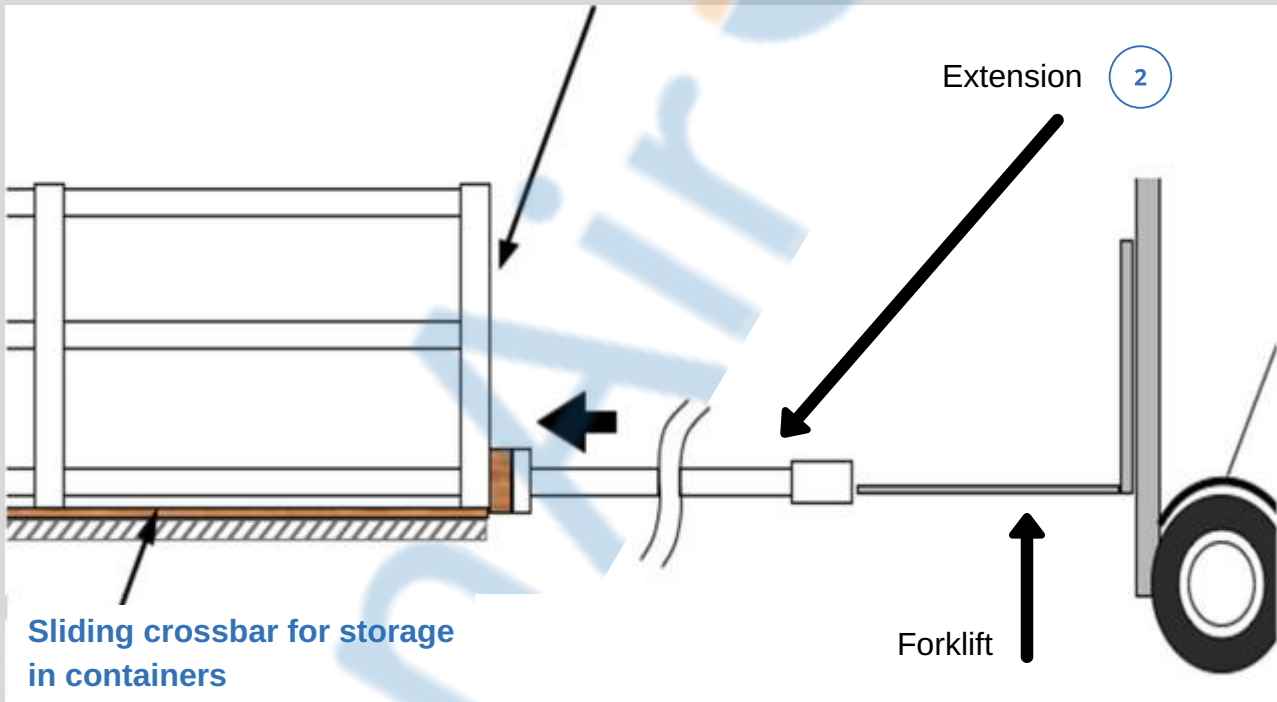


**Avoid dragging the packages on the floor** while moving. In this way it can be prevented the risk of colliding with obstacles and/or damaging collisions with the crate on the ground while moving. As a result it can be prevented the risk of broken the boards which could potentially jeopardise the solidness and the conditions of their contents.



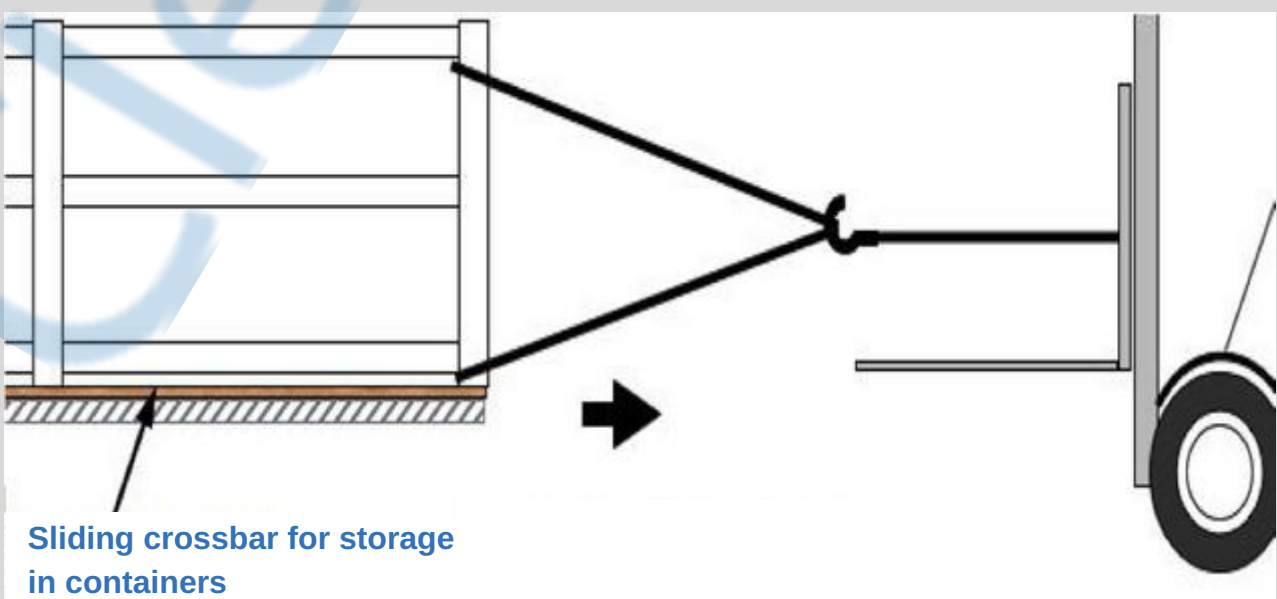
If the the ends of the forklift forks are not long enough to load the cages directly on containers, **an extension should be used** (please see the picture (2)), i.e a solid board sitting against the cage that distributes the thrust uniformly on the package.

### Stowage in containers

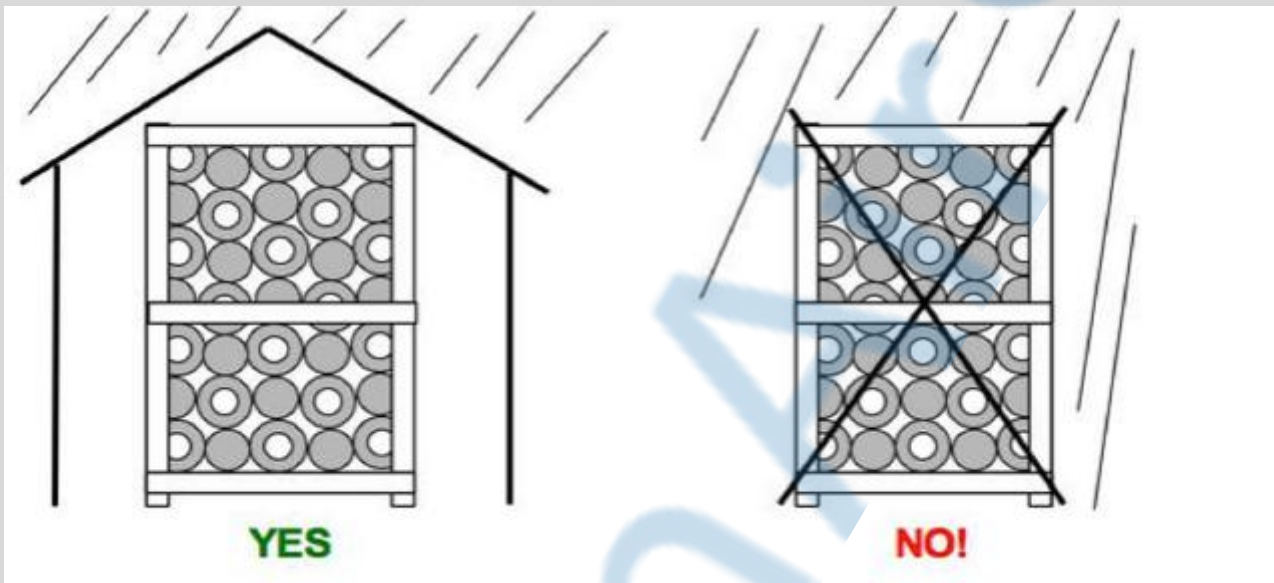


For the removal from the container, the operation shown here below is highly suggested. It is also recommended to take the utmost care so that to avoid breaking the boards when removing the package.

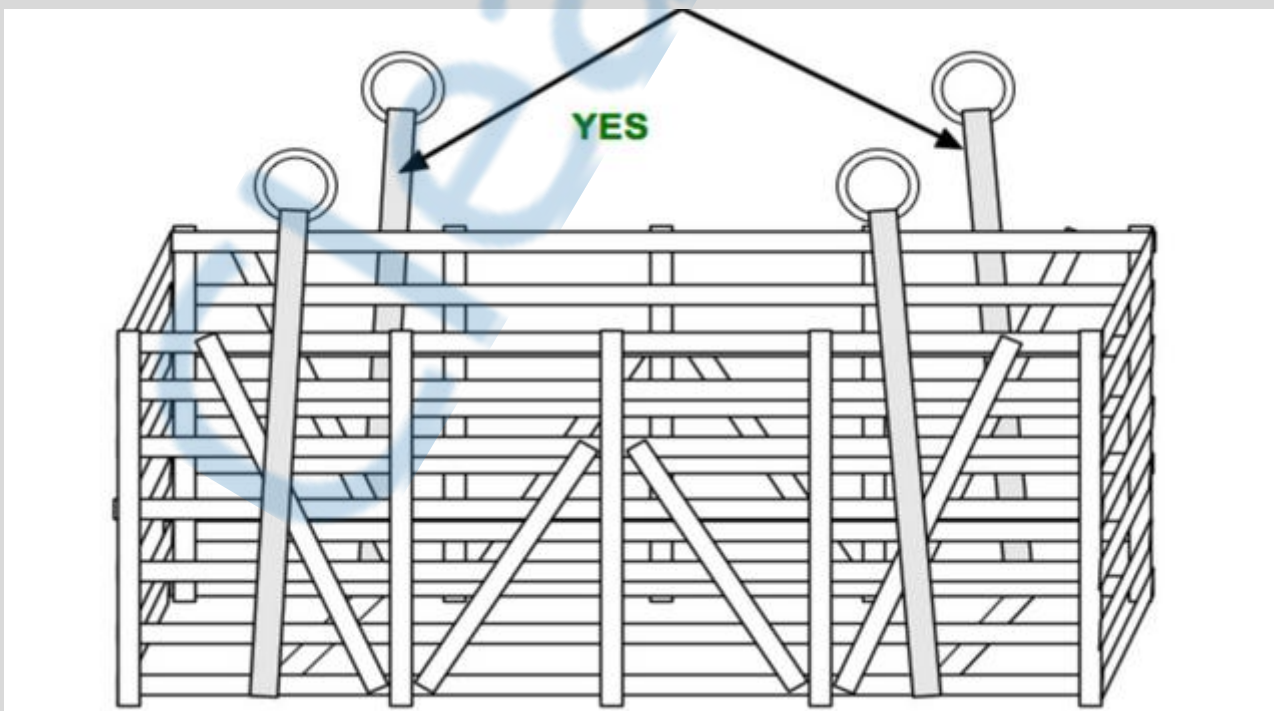
### Extraction from containers



For packages containing **cages** it is suggested to store them **inside only**, in places with a low humidity level, and **do not expose them to rain**.



The cages are **not built for being stacked** and they **cannot be moved with a lifting crane** if not agreed in advance, hence please use robust belts for lifting (see the drawing below).





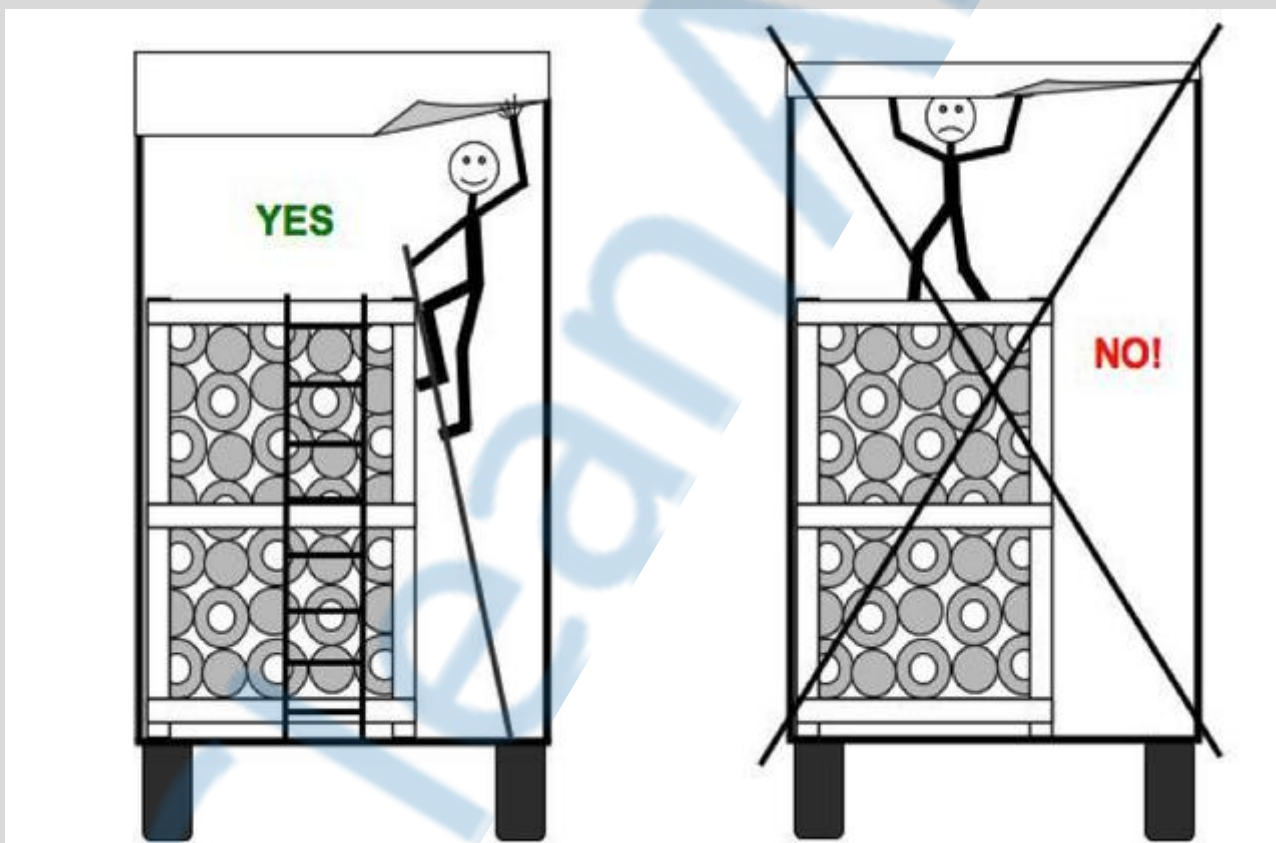
## CHAPTER 6: PRECAUTIONS AND SAFETY

### 6.1 Use of forklifts

Forklifts must only be used by personnel who is adequately trained and in possession of a specific license.

### 6.2 Hazards

In order to avoid accidents of any nature and damages to the materials contained in them, it is absolutely **forbidden** to walk on the packages. The correct procedure to follow is shown in the following figures:



If dangerous situations and/or damaged containers are discovered please do immediately inform the manager.



## CHAPTER 6. PRECAUTIONS AND SAFETY

### 6.3 Cage with Venturi

As far as the Cages with Venturi are concerned, we suggest to handle them with the help of two operators (see the picture below) so that to avoid bending the cage.



To install them use a crane or a heavy duty rope that hooks and lifts the Cage up to the bag house.

In case of any question or doubt about the handling and storage of filter bag cages, or for any further issue, please contact CleanAir office: + 39 031 4153551 / [info@cleanairworld.it](mailto:info@cleanairworld.it)

ALWAYS FOLLOW THE 3 RS:  
*"RESPECT FOR YOURSELF, RESPECT FOR OTHERS,  
RESPONSIBILITY FOR YOUR ACTIONS."*



CleanAir 



Clean Air Europe S.r.l.  
Via Roma 84 - 23892 Bulciago (LC)  
P.iva 03011000134 Tel. +39 031 4153551 | Fax +39 031 4153553  
info@cleanairworld.it | www.cleanairworld.it @cleanairworld

